

MASTER SERIES SPRING TYPE MULTI DISC HARROW



SMMD-22R



SMMD-22R



SMMD-22R



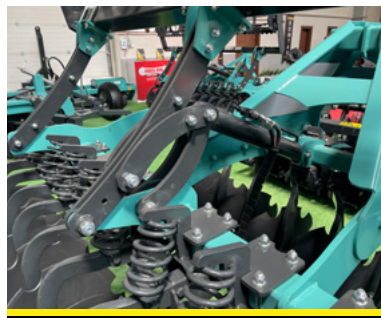
SMMD-22R



SMMD-24T



SMMD-24DT





GENERAL FEATURES

Its open design with large clearances effectively prevents blockage even when working with high contents of organic matter. The serrated concave discs (570-620 mm diameter), which are supported by maintenance-free angular ball bearings, form the basis for the outstanding quality of work produced by this highly durable implement. The concave disc beams, which are located inside closed pockets and feature robust coil springs to protect them against overloads, ensure precise disc guidance even under difficult conditions. An impact harrow, which can be individually and finely adjusted, is provided behind the two rows of discs for precise deposition of the flow of soil. This improves the distribution of straw when driving at a diagonal angle to the direction of threshing.

TECHNICAL DETAILS

CODE	MODEL OF LEG	WEIGHT (KG)		WORKING WIDTH (CM)	WORKING DEPTH (MM)	REQUIRED POWER (HP)
		57Q	62Q			
SMMD-16	SPRING	920	980	200	250	50-60
SMMD-18	SPRING	1030	1100	225	250	60-70
SMMD-20	SPRING	1140	1220	250	250	70-80
SMMD-22	SPRING	1250	1340	275	250	80-90
SMMD-24	SPRING	1365	1465	300	250	90-100
SMMD-26	SPRING	1490	1590	325	250	100-110
SMMD-28	SPRING	1600	1720	350	250	110-130
SMMD-32	SPRING	1820	1950	400	250	130-150

CODE	MODEL OF LEG	TYPE OF ROLLER	WEIGHT (KG)		WORKING WIDTH (CM)	WORKING DEPTH (MM)	REQUIRED POWER (HP)
			57Q	62Q			
SMMD-16R	SPRING	HYDRAULIC FOLDABLE CAGE TYPE ROLLER	1150	1230	200	250	50-60
SMMD-18R	SPRING		1300	1385	225	250	60-70
SMMD-20R	SPRING		1470	1540	250	250	70-80
SMMD-22R	SPRING		1600	1700	275	250	80-90
SMMD-24R	SPRING		1750	1850	300	250	90-100
SMMD-26R	SPRING		1900	2000	325	250	100-110
SMMD-28R	SPRING		2040	2150	350	250	110-130
SMMD-32R	SPRING		2300	2460	400	250	130-150



SOIL MASTER
AGRICULTURAL MACHINERY

HEAD OFFICE

Add: Fevzi Cakmak Mh. 10758 Sk. No: 16/G
42050 Karatay/Konya/TURKEY

T: +90 332 290 00 20
F: +90 332 290 00 19

FACTORY

Add: Büyükkayacık Osb, Yaylacık Cd. No:
23, 42250 Selcuklu/Konya/TURKEY

T: +90 332 239 18 85
T: +90 332 239 18 86
F: +90 332 239 18 87

www.soilmaster.com.tr



+90 (532) 137 01 74



info@soilmaster.com.tr



SOILMASTER AGRICULTURAL MACHINERY



For detailed information about
our products, you can scan the
QR code by your device.